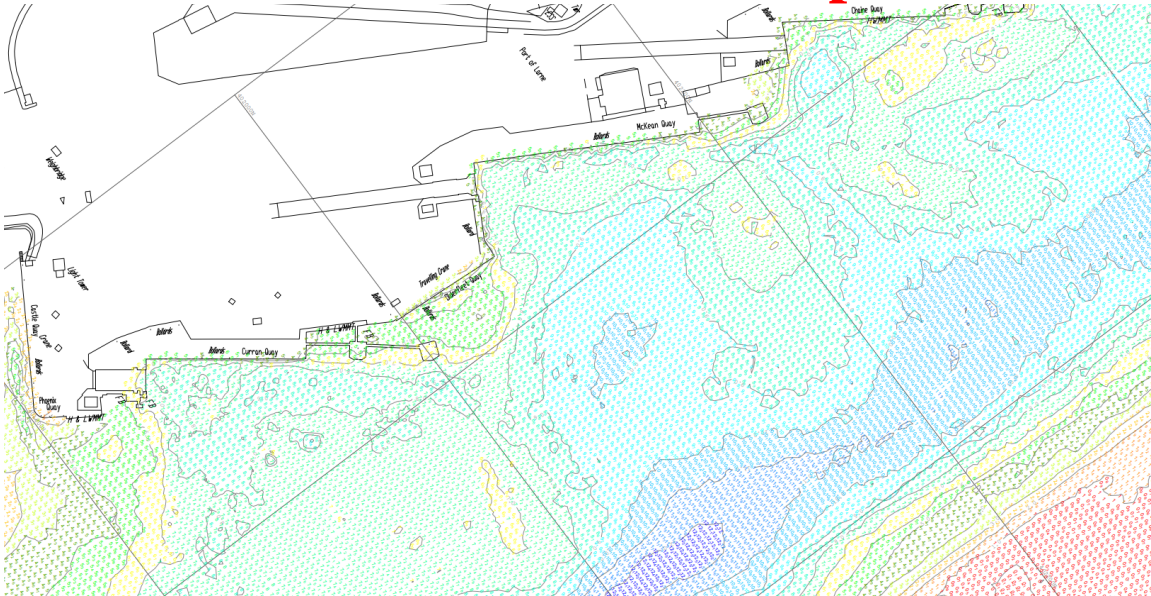


NOTICE TO MARINERS No 6 OF 2023

Berth and Channel Depths



Following a hydrographic survey of the Port and it's approaches on 9th August 2023, the below should be regarded as minimum depths by any mariners visiting the port:

Quay	Depth	On approach
Curran	7.1m	6.5m
Olderfleet	5.1m	5.1m
Mackean	6.5m	6.9m
Chaine	6.3m	6.0m
Continental	5.5m	6.5m
Main Channel	7.7m	

This notice replaces Notice to Mariners No.2 - 2023 re Berth and Channel Depths, which has consequently been cancelled.

Stuart Wilson
Harbour Master
LARNE PORT

Date: 05-09-2023